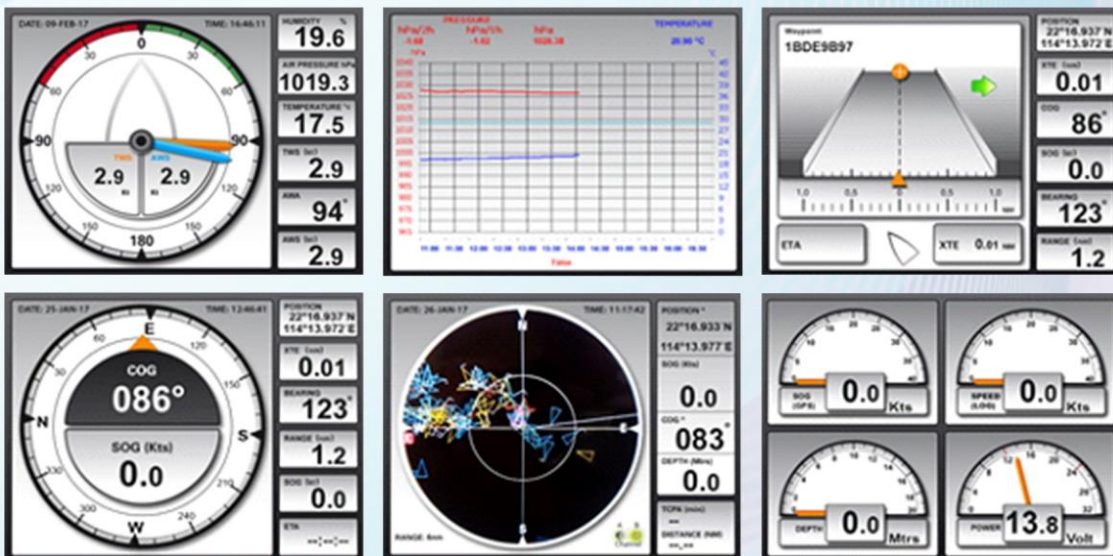


ONWA[®]

Marine Electronics

5.6-inch Multi-Function Display with NMEA Multiplexer

Model: **KMR-6**



- Can accept most major NMEA0183 sentences
- Provides 5 input ports and 2 output ports
- 6 display modes show the input NMEA0183 sentences in digital and graphic modes
- Mix and combine all 5 input NMEA0183 sentences into 2 outputs
- Weather alarm mode monitors the change of weather temperature and air pressure
- 4 input ports are opto-isolated

SPECIFICATIONS

OUTPUT / INPUT (IEC61162-1)

Input: 5 x NMEA0183

Input port 1

- a) Support sentences: AAM, APB, BOD, BWC, DBT, DPT, GGA, GLL, GSA, GSV, HDG, MTW, MWV, RMB, RMC, VHW, VTG, WPL, XTE, ZDA, HDM, HDT, MWD, VPW, VWR, VWT, XDR, ZDL.
- b) Baudrate: auto scan up to 38400
- c) Electrical: opto-isolated

Input port 2

- a) Support sentences: AAM, APB, BOD, BWC, DBT, DPT, GGA, GLL, GSA, GSV, HDG, MTW, MWV, RMB, RMC, VHW, VTG, WPL, XTE, ZDA, HDM, HDT, MWD, VPW, VWR, VWT, XDR, ZDL.
- b) Baudrate: 4800
- c) Electrical: opto-isolated

Input port 3

- a) Support sentences: AAM, APB, BOD, BWC, DBT, DPT, GGA, GLL, GSA, GSV, HDG, MTW, MWV, RMB, RMC, VHW, VTG, WPL, XTE, ZDA, HDM, HDT, MWD, VPW, VWR, VWT, XDR, ZDL.
- b) Baudrate: 4800
- c) Electrical: opto-isolated

Input port 4

- a) Support sentences: AAM, APB, BOD, BWC, DBT, DPT, GGA, GLL, GSA, GSV, HDG, MTW, MWV, RMB, RMC, VHW, VTG, WPL, XTE, ZDA, HDM, HDT, MWD, VPW, VWR, VWT, XDR, ZDL.
- b) Baudrate: 4800
- c) Electrical: opto-isolated

AIS input port 5

- a) Support sentences: AAM, APB, BOD, BWC, DBT, DPT, GGA, GLL, GSA, GSV, HDG, MTW, MWV, RMB, RMC, VHW, VTG, WPL, XTE, ZDA, HDM, HDT, MWD, VPW, VWR, VWT, XDR, ZDL, VDO, VDM
- b) Baudrate: 38400
- c) Electrical: RS232

Output: 2 x NMEA 0183

Output port 1

- a) Output sentences: mix of all inputs from Input port 1 through port 4
- b) Baudrate: 4800
- c) Electrical: RS232

Output 2

- a) Output sentences: mix of all inputs from Input port 1 through port 5
- b) Baudrate: 38400
- c) Electrical: RS232

POWER SUPPLY

Electrical Power Consumption Protection	10.5 – 35VDC 0.3A at 12VDC
	overcurrent, overvoltage, power transient and accidental reverse polarity protection

ENVIRONMENTAL CONDITIONS

Ambient Temperature	-15°C to +55°C
Humidity	93%±3% on 40°C
Waterproofing	IPX5

EQUIPMENT LIST

- | | |
|----------|---|
| Standard | <ol style="list-style-type: none"> 1. Display unit KMR-6 2. Mounting brackets 3. Manuals (quick start and quick installation manual) 4. Standard accessories pack (one power cable, one data cable, 2 spare fuses, 4 mounting screws) |
| Optional | <p>KMR-JB : For easy wire connections from external equipment, User can order Junction box (KMR-JB) for KMR-6. KMR-JB has a clear label of all input and output ports with baud rate and polarity. For more details, please consult your local ONWA distributor.</p> |



DIMENSIONS

